



Trans-Quip Inc.

WWW.https://trans-quip.com

Phone: (905) 945-4480

2 Cushman Road

Unit 12A St.

Catharines, Ontario

L2M 6S8, Canada

MATERIAL HANDLING & WAREHOUSE EQUIPMENT PROMOTION

1/2" STEEL STRAPPING SYSTEM

- Easy-to-use, efficient system provides maximum strength packaging, bundling and palletizing
- Contains open seals for flat surfaces

Contains:

- 1 **PF404** 1/2" x 0.20" steel strapping
- 1 **PC446** cutter 3/8" - 1 1/4"
- 1 **PC938** 3/8" to 3/4" wide standard tensioner
- 1 **PA550** 1/2" wide sealer for open seals
- 1 **PF408** 1/2" wide open seals 2000/box
- 1 **PE555** dispenser

KLETON



Model No.	Promo Price
PB654	763.00

FOOD PLANT SILICONE LUBRICANTS

- Multi-purpose silicone spray for food processing and handling applications
- Forms a colorless, odorless, non-staining film
- Eliminates binding and sticking in most metal to non-metal applications
- Accepted for use in Canadian food processing facilities
- Container Type: Aerosol Can
- NSF Registered H1
- Appearance: Clear Water-White Liquid
- Plastic Safe: Safe on Most Plastics
- Flashpoint: Less than -18°C
- Evaporation Rate: Fast



CRC

Model No.	Film Type	Net Size	Volume	Promo Price
YC014	Dry	284 g	473 ml	17.90

POLYESTER STRAPPING KIT

Includes:

- 1 **PE555** Dispenser
- 1 **PG175** 5/8" x 4000' x 1400lbs strength polyester strapping
- 1 **PF991** 5/8" open seals, 1000/box
- 1 **PF992** 5/8" polyester sealer
- 1 **PF993** polyester strapping tensioner
- Strapping Material: Polyester
- Fits Strapping Width: 5/8"

KLETON



Model No.	Promo Price
PG187	622.00

SALT & SAND CONTAINERS

- Waterproof and lockable which makes it ideal for many other outdoor storage uses aside from storing loose or bagged salt, sand, or ice melter
- It can also hold garden supplies, sporting goods, pool supplies, tools, garbage/recyclables, or anything else you want to safely store
- Constructed of rugged BPA-free UV-resistant polyethylene
- Built-in pockets for forklifts allow the bins to be moved without emptying them
- Capacity: 4.24 cu. ft.
- 21" L x 27" W x 26" H

NO614



NO615



JK232

RMP
PRODUITS D'ENTRETIEN - MAINTENANCE PRODUCTS

Model No.	Description	Colour	Promo Price
NO614	Container	Yellow	130.00
NO615	Container	Grey	130.00
JK232	Polyethylene Scoop, 2L	Yellow	6.25

Pricing in effect until December 27, 2024 or while quantities last. Taxes and freight extra. Issue #SDM224100NA

Due to recent commodity and market volatility, prices are subject to change, and may vary without prior notice.

POLY SNOW SHOVELS

- Blade Material: Polypropylene
- Handle Material: Steel
- Handle Type: D-Grip



Model No.	Wearstrip	Blade Dim. W" x H"	Overall Length"	Promo Price
NM809	Included	19-3/4 x 13-1/8	50-3/4	32.45
NM810	Not Included	19-3/4 x 13	51-3/8	31.60

POLY SNOW PUSHERS

- Powder-coated steel handle for added strength
- Ergonomic poly D-grip
- Blade Material: Polypropylene



Model No.	Wearstrip	Blade Dim. W" x H"	Overall Length"	Promo Price
NM812	Included	21-1/4 x 9-1/4	50-1/2	26.80
NM811	Not Included	24-1/2 x 10-3/4	54-1/2	33.20

NN138

BROADCAST SPREADERS WITH STAINLESS STEEL HARDWARE



- Metal gear inside of the gear box
- Stainless steel hardware in the hopper and pivot shaft
 - Metal control handle
 - Rate setting control on handle for precise adjustments
- Easy three-step assembly
- Spread Width: 10'-12'
- Includes: Raincover, screen

AURORA TOOLS

Model No.	Load Capacity	Coverage sq.ft.	Pneumatic Tire Size"	Promo Price
NN138	70 lbs.	15000	10	270.00
NN139	125 lbs.	27000	14	389.00

SCOOP SHOVELS

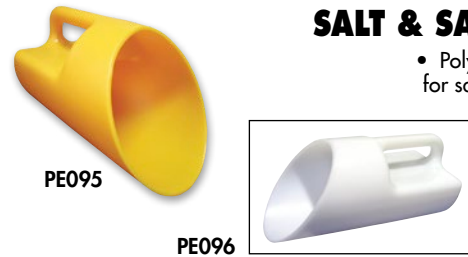
- Perfect for moving and scooping lightweight granulated materials
- Lightweight construction for comfort and productivity
- Hardwood handle with aluminum blade resistant to rust
- Blade Size: 14" x 18"



Model No.	Handle Type	Handle Length"	O.A Length"	Promo Price
TYX063	Straight	45-3/4	63-1/2	43.45
NM985	D-Grip	24-1/2	46-5/8	40.25

SALT & SAND SCOOPS

- Polyethylene scoop ideal for salt and sand, compost and animal feed



Model No.	Colour	Capacity	Promo Price
PE095	Yellow	1 gal.	23.95
PE096	White	1 gal.	22.95

HEAVY-DUTY OUTDOOR STORAGE CONTAINERS

- Thick-walled, durable polyethylene construction
- Double-walled reinforced lid
- Molded forklift channels and recessed hand holes



Model No.	Colour	Capacity cu. ft.	Promo Price
30" L X 24" W X 24" H			
ND337	Yellow	5.5	199.00
ND202	Grey	5.5	199.00
48" L X 24" W X 24" H			
NM947	Yellow	10	299.00
NM948	Grey	10	299.00

ALL PURPOSE TRACTION AID

- Pulse Grip tread design over a large surface area provides more traction on all surfaces
- Well positioned Ice Diamond™ spikes provide more comfort under the foot and improved traction
- Improved heel fit for better performance
- Geometrically designed webbing and improved shape comfortably fit a greater variety of footwear
- Traction Type: Stud
- Traction Material: Tungsten Carbide



Boots not included



Model No.	Size	Fits Shoe Size Men	Fits Shoe Size Women	Promo Price
SEB972	Small	4-7	5-8	32.99/Pair
SEB971	Medium	7.5-10	8.5-11	32.99/Pair
SEB970	Large	10.5-13	11.5-13	32.99/Pair
SEB973	X-Large	13.5-15	13.5-15	38.99/Pair

INTRINSIC MID-SOLE ICE CLEATS

- One-size-fits-all winter traction solution
- Intrinsic design is certified to prevent sparking when working in areas where combustible materials may be present
- Proud to be the only fully certified intrinsic ice-cleat brand in North America
- Strategically placed ice-penetrating spikes provide maximum traction on ice and snow
- Traction Type: Stud
- Traction Material: Polymer Blend
- Colour: Yellow/Orange/Black



Boot not included



SGN995

Model No.	Profile	Promo Price
SGN995	Original	40.99/Pair
SGP210	Low	40.99/Pair
SGU818	High	40.99/Pair

ACTIVARMR® 97-631 MEDIUM-DUTY THERMAL GLOVES

- Highest possible score on EN420 test
- PVC coating maintains flexibility in cold temperatures
- Flexible nylon layer protects against mechanical risks
- Soft and insulating acrylic layer provides comfort and warmth
- Gauge: 10
- Shell Material: Nylon
- Coating: Foam PVC
- Coating Style: Dipped Palm
- Inner Lining: Acrylic



Model No.	MFG No.	Size	Promo Price
SGF665	97631070	Small, 7	8.75/Pair
SGF666	97631080	Medium, 8	8.75/Pair
SGF667	97631090	Large, 9	8.75/Pair
SGF668	97631100	X-Large, 10	8.75/Pair
SGF669	97631110	2X-Large, 11	8.75/Pair

Mild Cold
SAJ553



Moderate Cold
SGU852



WINTER LINERS

- Winter liners give you added protection in cold conditions or on windy days
- Can be worn with caps, hats, welding helmets, hard hats or alone
 - Flame resistant outer shell
 - One size fits all
 - SAJ553: Single twill layer with napped inside
 - SGU852 & SGU851: Twill outer layer

Severe Cold
SGU851



Model No.	Lining Material	Type	Promo Price
SAJ553	Unlined	Mild Cold	5.90
SGU852	Poly-Cotton	Moderate Cold	8.20
SGU851*	Sheep	Severe Cold	11.95

* Full neck flap

COLDWORK™ FASTFIT® WINTER WORK GLOVES

- Stretch-elastic cuffs create a secure fit to your wrists
- Water-resistant SoftShell back of hand prevents the cold air from sneaking in
- Comfortable fleece insulation traps warm air without hindering your dexterity
- Rugged Armortex® thumb saddle reinforcement



Model No.	Size	Palm Material	Promo Price
SHB613	8	Synthetic	27.39/Pair
SHB614	9	Synthetic	27.39/Pair
SHB615	10	Synthetic	27.39/Pair
SHB616	11	Synthetic	27.39/Pair
SHB617	12	Synthetic	27.39/Pair

FLEECE BALACLAVA

- Can be used under hardhats
- Protects the head, face & neck from the harsh elements of winter
- Versatile; can be worn as a balaclava, neck warmer or as a dust mask
- Machine wash & air dry
- One size fits all



Model No.	Promo Price
SGJ655	5.15



STANDARD-DUTY CHROMATE WIRE SHELVING

- Shelves with open wire design minimize dust, improve air circulation and provide greater visibility of stored items
- Shelf ribs run front to back allowing items to slide on and off shelves smoothly
- Overall Capacity: 1000 lbs.
- Capacity is based on evenly-distributed weight
- No. Of Shelves: 5
- NSF certified



RN539



KLETON

Model No.	Kit Type	Shelf Capacity lbs.	Dimensions W" x D" x H"	Promo Price
RN539	Starter	500	36 x 14 x 74	179.00
RN540	Add-On	500	36 x 14 x 74	155.00
RN541	Starter	500	36 x 18 x 74	191.00
RN542	Add-On	500	36 x 18 x 74	168.00
RN543	Starter	500	48 x 18 x 74	225.00
RN544	Add-On	500	48 x 18 x 74	207.00
RN545	Starter	500	48 x 24 x 74	269.00
RN546	Add-On	500	48 x 24 x 74	254.00
RN547	Starter	400	72 x 24 x 74	374.00
RN548	Add-On	400	72 x 24 x 74	347.00

HEAVY-DUTY GREEN EPOXY FINISH WIRE SHELVING

KLETON

- Green epoxy wire shelving is ideal for use in wet environments
- Superior rust resistance
- Designed to minimize dust, improve air circulation and provide greater visibility of stored items
- Post's circular grooves combined with tapered plastic sleeves allow for assembly in minutes with no special tools
- NSF certified
- Overall Capacity: 2000 lbs.
- No. of Shelves: 5
- Capacity is based on evenly distributed weight



RL662



Model No.	Kit Type	Shelf Capacity lbs.	Dimensions W" x D" x H"	Promo Price
RL662	Starter	800	36 x 18 x 74	231.00
RL663	Add-On	800	36 x 18 x 74	222.00
RN113	Starter	800	36 x 18 x 86	218.00
RN114	Add-On	800	36 x 18 x 86	197.00
RL664	Starter	800	48 x 18 x 74	264.00
RL665	Add-On	800	48 x 18 x 74	254.00
RN115	Starter	800	48 x 18 x 86	263.00
RN116	Add-On	800	48 x 18 x 86	241.00
RL666	Starter	600	60 x 18 x 74	298.00
RL667	Add-On	600	60 x 18 x 74	289.00

HEAVY-DUTY CHROMATE WIRE SHELVING

- Heavy-gauge shelves with open wire design minimize dust, improve air circulation and provide greater visibility of stored items
- Post's circular grooves combined with tapered plastic split sleeves allow for assembly in minutes with no special tools
- Shelf ribs run front to back allowing items to slide on and off shelves smoothly
- Shelves can be adjusted at precise 1" intervals
- Overall Capacity: 2000 lbs.
- NSF certified
- No. of Shelves: 5



RL075



KLETON

Model No.	Kit Type	Shelf Capacity lbs.	Dimensions W" x D" x H"	Promo Price
RL075	Starter	800	36 x 18 x 74	232.00
RL076	Add-On	800	36 x 18 x 74	210.00
RL077	Starter	800	48 x 18 x 74	270.00
RL078	Add-On	600	48 x 18 x 74	249.00
RL079	Starter	600	60 x 18 x 74	303.00
RL080	Add-On	600	60 x 18 x 74	284.00
RL081	Starter	600	72 x 18 x 74	350.00
RL082	Add-On	800	72 x 18 x 74	327.00
RL083	Starter	800	36 x 24 x 74	280.00
RL084	Add-On	800	36 x 24 x 74	257.00

HEAVY-DUTY SHELVING

- Open style shelving provides clear access from all four sides
- Excellent storage for heavy materials
- Shelf capacity is based on evenly distributed loads
- Kit Type: Starter
- No. of Shelves: 5
- Material: Steel
- Shelving Unit Type: Bolted
- Colour: Grey



RN772



KLETON

Model No.	Overall Dim. W" x D" x H"	Shelf Capacity	Promo Price
RN772	36 x 18 x 72	3000 lbs.	495.00
RN773	48 x 18 x 72	3000 lbs.	599.00
RN774	60 x 18 x 72	3000 lbs.	799.00
RN775	36 x 24 x 72	3000 lbs.	595.00
RN776	48 x 24 x 72	3000 lbs.	717.00
RN777	60 x 24 x 72	3000 lbs.	945.00

HYDRAULIC PALLET TRUCKS



- Heavy-duty polyurethane tread bonded to cast iron core steering wheels and rollers provide superior performance
- **MP798:** Heavy-duty nylon wheels provide easy mobility
- Heavy-duty plastic roller facilitates entry and exit of pallets
 - Capacity: 5500 lbs.
 - Frame Material: Steel
 - Fork Width: 6-1/4"
 - Raised Height: 7.75"
 - Lowered Height: 3.25"
 - 1-Year Warranty

KLETON

MP793

Model No.	Frame Length"	Frame Width"	Promo Price
MP793	42	20.5	410.00
MP794	48	20.5	410.00
MP796	42	27	410.00
MP797	48	27	410.00
MP798	48	27	410.00

RACKING AISLE PROTECTORS

- Prevent collision damage to shelving/racking from fork lifts, pallet trucks or other in-plant vehicle accidents
- Corner wraps are 16" high with an angle of 5" H x 3" W x 1/4" D with four holes for anchoring to the floor
- Protectors can be customized to any other lengths and/or depths required
- Floor anchors not included
- Overall Width: 3"
- Overall Height: 16"
- Colour: Safety Yellow
- Material: Steel

RN059



KLETON

Model No.	O.A. Length"	Fits Racking Uprights	Description	Promo Price
RN059	50	42" W	Single Wrap Around, Left	186.00
RN060	50	42" W	Single Wrap Around, Right	186.00
RN061	56	48" W	Single Wrap Around, Left	194.00
RN062	56	48" W	Single Wrap Around, Right	194.00
RN063	47	42" W	Double Wrap Around	280.00
RN064	53	48" W	Double Wrap Around	308.00

BOLLARDS

- Bollards can be used to protect work areas, racking and personnel both indoors and outdoors
- Black plastic caps are removable
- Includes pre-drilled mounting holes
- Powder coat paint finish
- Material: Steel

KI293

KLETON

Model No.	Overall W"	x L"	x H"	Promo Price
KI293	4-1/2	x 4-1/2	x 36	98.00
KI294	4-1/2	x 4-1/2	x 42	113.00
KI295	4-1/2	x 4-1/2	x 48	129.00
KI316	5-1/2	x 5-1/2	x 36	108.00
KI317	5-1/2	x 5-1/2	x 42	121.00



FORK EXTENSIONS

- Handle large and oddly-shaped loads with increased stability
- Easy to use slide-on design
- Steel retaining strap prevents extensions from sliding off forks during use
- Fork extension may not extend more than 50% beyond existing fork
- Accommodates forks with maximum fork thickness of 2"

KLETON



Model No.	Length"	Overall Width"	Fork Extension Capacity lbs.	Promo Price
-----------	---------	----------------	------------------------------	-------------

ACCOMMODATES FORK WIDTH: 4"

MO778	54	5	4000	254.00/Pair
MO779	63	5	4000	285.00/Pair
ML346	72	5	3900	308.00/Pair
MO780	84	5	4000	386.00/Pair
ML348	96	5	2600	428.00/Pair

ACCOMMODATES FORK WIDTH: 5"

MO781	63	6	4000	303.00/Pair
ML347	72	6	4400	355.00/Pair
MO782	84	6	4000	402.00/Pair
MO783	96	6	4000	464.00/Pair

ACCOMMODATES FORK WIDTH: 6"

MO784	72	7	4000	389.00/Pair
MO785	84	7	4000	480.00/Pair
MO786	96	7	4000	589.00/Pair

POLYETHYLENE BOLLARD COVERS

- Enhance and protect the appearance of your steel bollards
- Reduce maintenance; avoid scraping and painting each spring
- Constructed of 1/8" UV stable polyethylene for durability
- Easy installation with patented GripperTabs™ included
- Colour: Yellow/Red
- Material: HDPE
- 5-year warranty against fading and cracking

KI327

KLETON



Model No.	Fits Bollard Length"	Fits Bollard Diameter"	Outside Diameter"	Promo Price
KI327	52	4-1/2	5	46.60
KI328	64	4-1/2	4.95	54.20
KI329	52	6-5/8	7	59.90
KI330	60	6-5/8	7.35	64.00

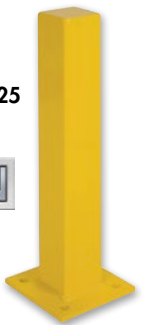
HEAVY-DUTY BOLLARDS

- Protect your warehouse equipment, as well as high traffic areas with these heavy-duty steel bollards
- 4" x 4" square tube welded to an 8" x 8" x 1/2" steel base complete with four 3/4" diameter holes for anchoring to floor
- Safety yellow powder coated finish

KD125

KLETON

Model No.	Overall W"	x L"	x H"	Promo Price
KD125	4	x 4	x 24	140.00
KH857	4	x 4	x 36	163.00
KD126	4	x 4	x 48	168.00



STACK & HANG BINS

- Innovative stacking design allows for greater visibility and easier access to contents
- Distortion-free from -40°C to 120°C
- Unaffected by oil, alkaline and most acids
- Ideal in production or for store display
- Included with each bin: I.D. card with clear plastic shield, four riser legs and connector clip

KLETON



1" riser legs increase loading capacity and stability



Connector clip allows for back-to-back mounting



Stackable using built-in feet



Built-in extrusions allow side-by-side interlock



Inclined faceplate with removable label and protector



Model No.				Outside Dimensions					Promo Price
Blue	Yellow	Green	Red	W"	x	D"	x	H"	
CB260	CB261	CC234	CC242	4-13/16	x	7-1/8	x	3-3/16	2.92
CB262	CB263	CC235	CC243	5-7/8	x	9-13/16	x	4-11/16	5.20
CB264	CB265	CC236	CC244	8-3/16	x	14	x	6-3/16	9.80
CC239	CC240	CC237	CC245	7-7/8	x	17-11/16	x	7	18.80
CB266	CB267	CC238	CC246	11-13/16	x	17-11/16	x	7	22.80

Note: Add 1 inch to overall height when stacking on legs.

JUMBO PLASTIC BINS

- Extra-large size provides massive amount of storage capacity
- Guaranteed unbreakable and distortion-free from -40°C to 120°C
- Unaffected by oil, alkaline and most acids
- Nesting design allows for minimal storage space when not in use
- Stackable for added space savings, up to 4 high
- Capacity: 200 lbs.

KLETON



Model No.				Outside Dimensions					Promo Price
Blue	Yellow	Green	Red	W"	x	D"	x	H"	
CF328	CF330	CF329	CF327	15-1/2	x	25	x	13	47.20

COLLAPSIBLE BULK CONTAINER

KLETON



- 2 drop gates knock-down with ease
- Quickly collapsed, folded, and stacked for convenient transportation
- Material: High-density polyethylene (HDPE)
 - O.A. Dim.: 47.2" L x 39.4" W x 39.4" H
 - Folded Height: 14.2"
- Weight capacity: 2000 lbs.
 - Colour: Grey

Lid sold separately (CF863)



Model No.	Promo Price
CF862	540.00

INDUSTRIAL STEP STOOLS

- Industrial-duty high density polyethylene is durable and corrosion proof
- Hand holes provide easy lifting locations for maneuverability
- Open bottom step design allows for easy stacking for storage while not compromising rigidity
- Stair anti-skid tape provides excellent grip and provides a safe non-slip surface
- Colour: Yellow
- Capacity: 560 lbs. (260 kg)

MP772



KLETON

Model No.	No. of Steps	Overall Dim.			Promo Price
		L"	x W"	x H"	
MP770	1	20-7/8	x 12-3/16	x 14-9/16	73.90
MP771	2	26	x 22-7/16	x 19-11/16	142.00
MP772	3	34-13/16	x 22-7/16	x 29-1/8	222.00

STEP STOOL

- Heavy-duty steel
- Comes with a double platform with non-slip rubber tread
- Spring-loaded casters retract under slight pressure, forcing base to the floor
- 11" diameter upper platform and 13 1/2" diameter lower platform
- 17-1/4" diameter base has an all-around protective bumper
- No. of Steps: 1
- Capacity: 330 lbs.
- Colour: Black

KLETON



Model No.	Overall Dim.			Promo Price
	L"	x W"	x H"	
ON528	17-1/4	x 17-1/4	x 16-1/2	86.30

PARTS CABINETS

- Housed in all-welded galvanised steel cabinet
- I.D. card with clear plastic shield and divider included with every drawer
- New design allows 98% use of drawer space to store larger tools or materials
- Grey enamel finish

KLETON

CD440



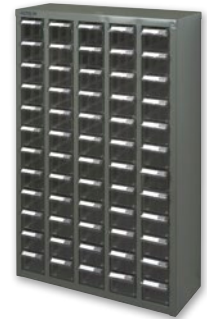
KPC-400 PARTS CABINET

- Heavy-duty ABS beige drawers
- Drawer size: 4.7" W x 8.6" D x 2.7" H

Model No.	Dim. W" x D" x H"	No. of Drawers	Promo Price
CF298	23-1/10 x 8-7/10 x 13-4/5	16	252.00
CA892	22-3/5 x 8-7/10 x 36-9/10	48	444.00
CD440*	22-3/5 x 10-4/5 x 36-9/10	48	716.00

* Comes with locking door

CC454



KPC-500 PARTS CABINET

- Clear polystyrene drawers
- Drawer size: 3.5" W x 8.6" D x 2.7" H

Model No.	Dimensions W" x D" x H"	No. of Drawers	Promo Price
CF305	18-3/10 x 8-7/10 x 13-4/5	16	247.00
CC454	22-3/5 x 8-7/10 x 36-9/10	60	580.00

CF312



KPC-600 PARTS CABINET

- Clear polystyrene drawers
- Drawer size: 3.5" W x 8.6" D x 2.2" H

Model No.	Dimensions W" x D" x H"	No. of Drawers	Promo Price
CF311	13-9/10 x 8-7/10 x 16-3/10	18	191.00
CF312	18-1/3 x 8-2/3 x 13-3/4	20	223.00
CF313	23-1/10 x 8-7/10 x 13-4/5	25	260.00
CF314	18-3/10 x 8-7/10 x 25-3/10	40	359.00
CF315	23-1/10 x 8-7/10 x 36-9/10	75	660.00

STEP STOOL LADDER

- Aluminum ladder cart is ideal for home, office or store use
 - Strong and lightweight aluminum construction
 - Converts from a step stool into a hand truck
 - Hand truck nose plate measures 15" wide
 - No. of Steps: 3
 - Overall Dimensions: 20" L x 18" W x 38-1/2" H
 - Hand Truck Capacity: 132 lbs.
 - Step Stool Capacity: 330 lbs.
 - Ladder Dimension: 14" x 32" x 47"
 - Step Rise: 10"
- Trolley Dimensions: 14-1/2" x 16-1/2" x 50"



BIOS living

Model No.	Promo Price
MO009	148.80

MAXI ROUND MOBILE WORK SCAFFOLDING

- Multi-level working area
- 3 Large anti-slip steel platforms adjustable to every rung height
- Foldable unit for easy installation and storage
- Allows users to reach 12' high
- Overall Height: 78-1/4"
- Overall Width: 75"
- Capacity: 700 lbs.



METALTECH

Model No.	Promo Price
MB086	555.00

3400 SERIES INDUSTRIAL EXTRA HEAVY-DUTY STEP LADDER

- High strength to weight ratio provides an economical alternative for general contract work
- Super tough copolymer top for strength and durability
- Wide 3" slip-resistant serrated aluminum steps for safe climbing
- Rugged outside zinc coated steel spreader arms
- Nominal Height: 4' • Capacity: 300 lbs
- Base Width: 18-1/2" • Base Depth: 30"
- ANSI Type: 1A • CSA Grade: 1A
- Highest Standing Point: 23"
- Open Height: 46"

FEATHERLITE
INDUSTRIAL LADDERS



Model No.	Promo Price
VC241	188.00

TELESCOPING MULTI-POSITION LADDER

- Works as an extension ladder, step ladder, stairway ladder, and 90° wall ladder
- Folded Height: 13'
- Scaffold Height: 1.916'
- Material: Aluminum
- Capacity: 300 lbs.
- Extension Range: 2.916' - 9.75'
- ANSI Type: 1A
- CSA Grade: 1A
- No. of Positions: 19
- Closed Dimensions: 22.25" x 7.75" x 42.75"
- Maximum Reach: 14'4" (Calculated with a 5'9" Person with a Vertical Reach of 12")

METALTECH



Model No.	Promo Price
VD689	196.00

3400 SERIES INDUSTRIAL EXTRA HEAVY-DUTY STEP LADDER

- High strength to weight ratio provides an economical alternative for general contract work
- Super tough copolymer top for strength and durability
 - Wide 3" slip-resistant serrated aluminum steps for safe climbing
- Rugged outside zinc coated steel spreader arms
 - Nominal Height: 6'
 - Capacity: 300 lbs.
 - Base Width: 21-9/16"
 - Base Depth: 42-3/4"
 - ANSI Type: 1A
 - CSA Grade: 1A
- Highest Standing Point: 45"
- Open Height: 68"

FEATHERLITE
INDUSTRIAL LADDERS



Model No.	Promo Price
VC243	260.00

INDUSTRIAL HEAVY-DUTY PLATFORM STEPLADDER (6500 SERIES)

- Durable non-conductive "C" channel side rails in high visibility safety yellow
- Large safe and comfortable standing platform, 14" x 18"
- Wide 3" slip-resistant serrated aluminum steps for safe climbing
- Rugged outside zinc coated steel spreader arms
- Nominal Height: 4'
- Material: Fibreglass
- Platform Height: 24"
- Capacity: 300 lbs.
- Base Width: 21"
- Base Depth: 30"
- ANSI Type: 1A
- CSA Grade: 1A
- Open Height: 46"

FEATHERLITE
INDUSTRIAL LADDERS



Model No.	Promo Price
VC205	268.00

ALL-WELDED DEEP HI-BOY STORAGE CABINETS



- 4 fully adjustable shelves
- Includes recessed handle and cylinder lock
- 36" W x 24" D x 72" H
- Material: Steel
- Shelf Capacity: 150 lbs. evenly distributed



FJ884

FJ882



Model No.	Colour	Promo Price
FJ884	Charcoal	754.00
FJ882	Black	754.00

WARDROBE STORAGE CABINET

- Made of cold rolled steel sheets of commercial quality
- Features a lock
- **Includes:** Coat rod
- 36" W x 18" D x 72" H
- No. of Shelves: 1
- Colour: Black
- Material: Steel
- Shelf Capacity: 150 lbs.
- Welded (Assembled)
- Top Gauge: 20
- Door & Sides Gauge: 20
- Shelf Gauge: 20
- Bottom Gauge: 20
- Back Gauge: 24



Model No.	Promo Price
FL790	794.00

HI-BOY STORAGE CABINET



- Made of cold rolled steel sheets of commercial quality
- Features a lock
- 36" W x 18" D x 72" H
- No. of Shelves: 4
- Colour: Black
- Material: Steel
- Shelf Capacity: 150 lbs.
- Welded (Assembled)
- Top Gauge: 20
- Door & Sides Gauge: 20
- Shelf Gauge: 20
- Bottom Gauge: 20
- Back Gauge: 24



Model No.	Promo Price
FL788	826.00

CLEAN LINE™ LOCKERS

- **Single tier locker includes:** One hat shelf, three coat hooks and aluminum recessed padlock handle
- **Double and Triple lockers include:** Two coat hooks per opening and aluminum recessed padlock handle
- Prime grade cold rolled steel locker
- All welded frame and door
- Riveted body
- Frames are resistance welded on all four corners to form a rigid structure
- Colour: Grey
- Top Style: Basic
- Non-Perforated
- Bank Width: 12"
- Overall Depth: 18"
- Overall Height: 72"
- Door Width: 10"
- Inside Depth: 18"
- Bodies: 24 gauge
- Doors: 20 gauge
- Frames: 16 gauge
- Shelves: 24 gauge

FJ151

FJ155

FJ159

FJ171



Model No.	Bank of	Door Height"	Overall Width"	Promo Price
-----------	---------	--------------	----------------	-------------

SINGLE TIER

FJ151	1	65-1/2	12	275.00
FJ152	2	65-1/2	24	496.00
FJ153	3	65-1/2	36	742.00
FJ154	4	65-1/2	48	988.00

DOUBLE TIER

FJ155	1	32	12	291.00
FJ156	2	32	24	532.00
FJ157	3	32	36	795.00
FJ158	4	32	48	1062.00

TRIPLE TIER

FJ159	1	21	12	373.00
FJ160	2	21	24	688.00
FJ161	3	21	36	1032.00
FJ162	4	21	48	1377.00

LOCKERETTES

FJ171	1	10	12	458.00
FJ172	2	10	24	865.00
FJ173	3	10	36	1300.00
FJ174	4	10	48	1729.00

SCRAPER MATTING

- Scrape shoes and boots clean to avoid tracking dirt, slush, and snow
- Durable rubber mat resists harsh weather conditions
- Numerous rubber fingers are ideal for trapping dirt
- Beveled edging to help prevent tripping
- Easy to clean
- Traffic: Heavy Duty
- Surface Pattern: Textured
- Thickness: 1/2"

SFQ527



Model No.	Dimensions W' x L'	Promo Price
SFQ527	2 x 2-2/3	46.35
SFQ528	2-2/3 x 3-1/4	63.85
SFQ529	2-1/3 x 3-5/6	77.55
SFQ530	3 x 5	109.00
SFQ531	3 x 6	120.00

ZENITH®
Safety Products

FINE RIBBED RUBBER MATTING

- Durable rubber mat resists harsh weather conditions
- Easy to clean
- Adds traction to any entrance
- Thickness: 1/8"
- Traffic: Light-Medium
- Colour: Black

ZENITH®
Safety Products

SDL875

Model No.	Dimensions W' x L'	Promo Price
SDL875	2 x 75	267.00
SDL876	3 x 75	373.00
SDL877	4 x 75	527.00
SDL878	2 x lin.ft.	4.20/lin.ft.

INDUSTRIAL VACUUMS

- Swiveling casters provide ease of movement in any direction
- Rear blower port
- Strong top handle for easy carrying
- 16' power cord
- Type: Wet-Dry
- Peak HP: 6 HP
- Motor Stage: 1-Stage
- Air Flow: 100 CFM
- **Accessories include:**
1-7/8" x 6' hose (Model EB301),
2-1/2" x 6' hose (Model EB302 & SDN119),
two extension wands, crevice nozzle,
utility nozzle, floor brush,
cartridge filter and dust bag

AURORA
TOOLS



EB301



SDN119

EB302



Model No.	Material	Tank Capacity	Promo Price
EB301	Stainless Steel	8 US gal.	180.00
EB302	Stainless Steel	16 US gal.	344.00
SDN119	Polypropylene	16 US gal.	280.00

PORTABLE SHOP VACUUM

shop-vac.

- Heavy-duty power in a convenient portable size
- Works great to clean wet or dry messes in garages, workshops or basements
- Attach the Lock-On® hose to the rear blower port to blow dirt out of those hard to reach places or grass clippings from sidewalks
- Hand-held design
- Onboard accessory storage
- Type: Wet-Dry
- Material: Polycarbonate
- Tank Capacity: 5 US Gal. (18.9 Litres)
- Peak HP: 6 HP • Air Flow: 65 CFM
- Sealed Pressure: 50"
- Peak Air Watts: 350
- Electrical Rating: 120 V 60 Hz 11.8 Amps
- **Includes:** Wet/dry vacuum, 7' Lock-On® hose, Claw utility nozzle, Crevice tool, Adaptor, Tool holder, Small cartridge filter (Type AA), Small foam sleeve (Type CC), 5-8 Gallon high efficiency disposable filter bag (Type H)



Model No.	Cord Length'	Hose Dia. "	Hose Length'	Promo Price
EB328	20	1.5	7	191.00

BUILT-IN PUMP SHOP VACUUM

shop-vac.

- Features large tank drain and blower port
- The hose attaches to the rear blower port allowing you to blow the dirt out of those hard to reach places
- Type: Wet-Dry
- Material: Polycarbonate
- Tank Capacity: 18 US Gal. (68.1 Litres)
- Peak HP: 6 HP
- Motor Stage: 1-Stage
- Air Flow: 130 CFM
- Static Pressure: 50"
- Air Watts: 235 W
- Electrical Rating: 120 V 60 Hz 11.8 Amps
- **Includes:** (1) Vacuum, (1) 22 Gallon high efficiency disposable filter bag (90673), (2) 2.5" Diameter extension wands (90684), (1) 14" Wet/dry floor nozzle (90677), (1) 8' Lock-On® hose, (1) 8" Utility nozzle (90675), (1) Concentrator nozzle (90683), (1) Crevice tool (90678), (1) Elbow grip, (1) Foam sleeve (90585 Type R), (1) Tool storage basket, (1) Cartridge filter (90304 Type U)



Model No.	Cord Length'	Hose Dia. "	Hose Length'	Promo Price
EB335	20	2.5	8	474.00

SHOP VACUUM

shop-vac.

- Ideal for hospitals and hotels
- Type: Wet-Dry
- Material: Metal
- Tank Capacity: 55 US Gal. (208.2 Litres)
- Peak HP: 3 HP • Motor Stage: 2-Stage
- Air Flow: 80 CFM
- Sealed Pressure: 95" • Air Watts: 230 W
- Electrical Rating: 120 V 60 Hz 11 Amps
- **Includes:** Vacuum, 12' Crush-resistant hose, Claw utility nozzle, Right angle connect Ultra-Web® cartridge filter



Model No.	Cord Length'	Hose Dia. "	Hose Length'	Promo Price
EB342	35	1.5	12	1478.00

RYNO PUSH BROOMS WITH BRACED HANDLE

- Ideal for rough concrete and moving heavier debris
- Assembled broom with a bolt-on, 1-1/8" thick wood handle and broom brace
- Bristle Material: PVC
- Brace Material: Steel
- Handle Length: 60"
- Bristle Length: 4"



Model No.	Block Length"	Sweep Action	Bristle Colour	Promo Price
JM917	18	Fine	Blue	33.05
JM918	24	Fine	Blue	37.50
JN065	36	Fine	Blue	57.20
JM914	18	Medium	Red	32.15
JM915	24	Medium	Red	37.85
JM916	36	Medium	Red	56.60

RYNO PUSH BROOMS WITH BRACED HANDLE



- Ideal for rough concrete and moving heavier debris
- Assembled broom with a bolt-on, 1-1/8" thick metal handle and broom brace
- Bristle Material: PVC
- Block Material: Wood
- Handle Length: 60"
- Bristle Length: 3.75"



Model No.	Block Length"	Bristle Colour	Sweep Action	Promo Price
JM910	24	Green & Black	Stiff	35.70
JM911	24	Red & Black	Stiff	35.70
JM907	36	Blue & Black	Stiff	53.34
JM912	18	Orange & Black	X-Coarse	35.59
JM913	24	Orange & Black	X-Coarse	41.99

YACHT MOPS WITH HANDLE

- Strong durable mops are made with premium cotton yarn
- Wire-bound to handle
- Presoak 12 hours prior to use
- Type: General Use
- Style: Cut
- Material: Cotton
- Handle Length: 54"
- Handle Material: Wood



Model No.	Mop Weight	Promo Price
JM997	8 oz.	8.60
JM994	12 oz.	9.50
JM995	16 oz.	10.10
JM996	20 oz.	11.40

MOP BUCKET & WRINGER

- Wringer and bucket setup reduces splashing for a safer and cleaner work environment
- Built to accommodate heavy use
- Handles and wide rounded spout facilitate emptying
- Compatible with cleaning carts
- Colour: Yellow
- Bucket Capacity: 9.5 US Gal. (38 Quart)



Model No.	Wringer Type	Promo Price
JG811	Side Press	99.95
JG952	Down Press	123.00

"WET FLOOR" POP-UP SAFETY CONE

- Bright yellow colour promotes visibility of the safety hazard(s) to help prevent accidents
 - Polyester construction is easy to hand wash and resists damage from oils and various chemical solvents
- Bilingual pictogram is large for improved legibility
- Plastic case and wall mounting hardware included
 - Height: 30"
 - Display Type: Upright



Model No.	Promo Price
JI455	37.45

BILINGUAL SAFETY FLOOR SIGN

- Durable polypropylene construction
- Message in both English and French
- 12" W x 24" H
- Display Type: Upright



Model No.	Promo Price
JD391	14.90

INDUSTRIAL GARBAGE BAGS

- Excellent strength and puncture resistance eliminates the need for double bagging
- Less harmful for the environment and are certified UL Ecologo by a well recognized Canadian third party certification body
- Material: Recycled
- Type: Open Top

JM669



Model No.	Strength	Dim. L" x W"	Qty /Box	Thickness mils	Promo Price
WHITE					
JM685	Utility	20 x 22	500	0.65	26.39/Box
JM686	Utility	22 x 24	500	0.65	29.95/Box

CLEAR

JM687	Utility	20 x 22	500	0.65	26.50/Box
JM688	Utility	22 x 24	500	0.65	31.15/Box
JM689	Strong	26 x 36	200	0.9	29.60/Box
JM690	Strong	30 x 38	200	0.9	35.75/Box
JM691	Strong	35 x 50	125	0.9	36.10/Box
JM692	Strong	42 x 48	125	0.9	40.75/Box
JM693	X-Strong	26 x 36	125	1.2	24.39/Box
JM694	X-Strong	30 x 38	125	1.2	29.60/Box

BLACK

JM669	Utility	20 x 22	500	0.65	20.75/Box
JM670	Utility	22 x 24	500	0.65	24.80/Box
JM671	Utility	24 x 22	500	0.65	24.80/Box
JM679	X-Strong	26 x 36	125	1.2	19.50/Box
JM680	X-Strong	30 x 38	125	1.2	23.75/Box

DESKSIDE WASTEBASKETS

- Compact size fits under most desks
- Perfect for daily office use
- Made of durable, lightweight polyethylene that will not rust, chip or dent

JK674



JK673



Model No.	Capacity US Qt.	Dim. W" x D" x H"	Bag Size"	Promo Price
BLACK				
JK672	14	11.60 x 8.11 x 12	22 x 24	8.45
JK674	28	14 x 10.5 x 15	26 x 36	9.50
BLUE				
JK673	14	11.60 x 8.11 x 12	22 x 24	6.50
JK675	28	14 x 10.5 x 15	26 x 36	9.50

LARGE WASTE CONTAINER

- Made of durable polyethylene that will not rust, chip or dent
- Nestable
- Handle grips allow for easy & comfortable gripping & lifting
- Lid sold separately
- Capacity: 44 US gal.
- Overall Width: 27.60"
- Diameter: 24"
- Height: 31.50"
- Colour: Grey



Model No.	Promo Price
JK676	66.00

RECYCLING & GARBAGE BIN WITH CLASSIFICATION LID

- Lid design promotes easy and efficient waste classification
- Plastic construction prevents rusting, chipping and peeling
- Optional rolling base allows for easy movement of waste bin
 - Trolley sold separately
 - Capacity: 16 US gal.
 - Material: Plastic
 - Bag Size: 30" x 38"



JL265



JL263

JL264

Model No.	Lid Style	Colour	Promo Price
JL263	Rectangle	Blue	53.95
JL264	Round	Red	53.95
JL265	Round	Yellow	53.95

GARBAGE CANS

- Handle allows for easy lifting
- Lid contains the odour and contents
- Material: Plastic

JN514



Model No.	Capacity US gal.	Promo Price
JN514	15	40.40
JN513	26	54.20

CONCENTRATED CLEANERS & DEGREASERS

JA468

JL789



CHEMOTEC

Model No.	Description	Format	Fragrance	Promo Price
JL789*	Heavy-Duty	4-L Jug	Lemon	11.20
JA468	Powdered	18-kg Pail	Pine	86.25

*Accepted for use in Canadian food processing facilities

V-ROSE DISH DETERGENT

- Phosphate-free
- Accepted for use in Canadian food processing facilities
- Pink liquid dish detergent for hand dishwashing
- Excellent performance and value



CHEMOTEC

Model No.	Format	Fragrance	Promo Price
JA501	4-L Jug	Fresh	10.15

MULTI-PURPOSE CLEANER & DEGREASER

RMP
PRODUITS D'ENTRETIEN - MAINTENANCE PRODUCTS

- Concentrated
- Accepted for use in Canadian food processing facilities
- Certified UL ECOLOGO® 2759
- Formulated to safely clean and deodorize all washable surfaces
- Biodegradable, non-toxic, non-corrosive
- Contains natural tangerine essential oils



Model No.	Format	Promo Price
JC001	4-L Jug	14.95

NEUTRAL CLEANERS

RMP
PRODUITS D'ENTRETIEN - MAINTENANCE PRODUCTS

- Biodegradable, non-toxic, non-corrosive
- Concentrated
- Accepted for use in Canadian food processing facilities
- Safely cleans all washable surfaces using a neutral pH concentrated formulation
- No rinse formulation
- Certified UL ECOLOGO® 2777



JC006

JC007

Model No.	Description	Format	Promo Price
JC006	Tangerine Oil	4-L Jug	13.90
JC007	Pine Oil	4-L Jug	13.90

WINDEX® GLASS CLEANERS WITH AMMONIA-D®

- Perfect for cleaning windows, mirrors, glass shower doors, glass top stoves, and more
- Ammonia-D® starts working on fingerprints, dirt, and other messes before you wipe



JO155



OQ982

SC Johnson
PROFESSIONAL
A family company™

Model No.	Format	Promo Price
JO155	32-fl. oz. Trigger Bottle	6.59
OQ982	3.8-L Jug	15.99

WINDEX® GLASS CLEANER

SC Johnson
PROFESSIONAL
A family company™

- Institutional strength formula
- Exclusive Ammonia-D® plus special grease cutting actives and surfactants loosen soil on contact
- No streaking or filming on stainless steel, chrome, porcelain, ceramic tile, Plexiglas® and Formica®
- Pleasantly scented and phosphate-free



Model No.	Format	Promo Price
JA909	765-ml Trigger Bottle	7.00

TURBOTOE® SAFETY TOE CAPS

- 100% waterproof, will not harden, stiff or crack
- Perfect for visitors, casual or temporary workers, management, clerical staff and sales people
- Can be comfortably worn over low-heel, dress and running shoes and most boots
- Ideal for many working environments that carry a risk of toe damage, or have a steel toe cap requirement
- Certification(s): CSA Z334-14



SED175

Model No.	Size	Fits Size	Colour	Promo Price
SED175	X-Small	4-5	Grey	33.19/Pair
SED176	Small	6-7	White	33.19/Pair
SED177	Medium	8-9	Yellow	33.19/Pair
SED178	Large	10-11	Red	33.19/Pair
SED179	X-Large	12-13	Blue	33.19/Pair
SED180	2X-Large	13-14	Green	33.19/Pair
SDS772	3X-Large	15-16	Black	33.19/Pair

MEGACOMFORT™ MEGASOLE™ GEL ANTI-FATIGUE INSOLES



- Thinner profile for better fit
- Features MegaGel™ Visco technology
- Ergonomically designed by a doctor, using a patented combination of high-density dual layer 100% memory foam
- Clinically proven and field tested to reduce pain and fatigue while increasing balance and comfort
- Colour: Yellow, Black & Blue



SGH006

Model No.	Men's Shoe Size	Ladies Shoe Size	Gender	Promo Price
SHG006	-	5 - 7	Ladies	23.99/Pair
SHG007	6 - 7	8 - 9	Unisex	23.99/Pair
SHG008	8 - 9	10 - 11	Unisex	23.99/Pair
SHG009	10 - 11	12 - 13	Unisex	23.99/Pair
SHG010	12 - 13	-	Men	23.99/Pair
SHG011	14 - 15	-	Men	23.99/Pair



SHOE & BOOT COVERS

- Elasticized band for an optimum fit
- Sewn seams offer maximum tear strength
 - Microporous film laminated to a polypropylene substrate
- Offers protection against liquid, dust and light chemical splashes
 - One Size
 - Colour: White
- Type: Regular Sole
 - Qty/Pkg: 50



SGX673



SGX674

Model No.	Description	Dimensions L" x H"	Promo Price
SGX673	Shoes	15.5 x 7.5	18.95/Pkg.
SGX674	Boots	15.5 x 17.5	37.95/Pkg.

A700 SERIES SAFETY GLASSES

- Lightweight design with sport temples
- Soft temple tip pads provide a secure, comfortable fit
- Moulded universal nose bridge
- 9-base polycarbonate hard coated lenses provide 180° field of distortion-free vision
- Standard(s) Met: CSA Z94.3



SAO669



Model No.	Lens Tint	Frame Colour	Order Qty*	Promo Price
ANTI-SCRATCH				
SAO669	Clear	Clear	5	2.45
SAO670	Grey/Smoke	Grey	5	2.69
SAO672	Blue/Mirror	Grey	1	3.95
SAO673	Indoor/Outdoor Silver/Mirror	Clear	1	3.95

ANTI-FOG

SAO674	Clear	Grey	5	3.19
--------	-------	------	---	------

* Must be ordered in these multiples



LASER LITE® MULTICOLOUR FOAM EARPLUGS

- Self-adjusting foam expands to fit virtually every wearer
- Contoured T-shape for easy insertion and wear
 - NRR of 32 dB
 - Certification(s): ANSI S3.19-1974/CSA Class AL



SM563



SM562

Model No.	Description	Pairs /Box	Promo Price
SM562	Uncorded	200	28.49/Box
SM563	Corded	100	27.55/Box

NORTH® SHORT BRIM HARDHAT

- High-density polyethylene (HDPE)
- Four-point ratchet suspension
- Dual-locking mechanism
- Brackets compatible with Honeywell adapters
- Vented
- Certification(s): CSA Type 1, ANSI Type I
- Class: CSA Class C, ANSI Class C



Model No.	Colour	Promo Price
SGX507	White	10.89

DOCK LIGHT

- Built-in on-off switch
- Durable stainless steel cage for better protection of the light
- Bracket mounted for easy installation
- Arm sections are adjustable in all directions
- Extended Arm Length: 40"
- Lamp Type: LED
- Wattage: 50W
- Head Type: Metal
- Lumens: 5500



AURORA
TOOLS

Model No.	Promo Price
XI316	229.00

RUNNING MAN EXIT SIGN

- New easy click design allows for fast installation
- Single face or double face orientation
- Various mounting orientation (wall, side, ceiling)
- Ideal for use in offices, schools and warehouses
- 2 hours of emergency light duration
- Length: 12-1/10"
- Width: 11"

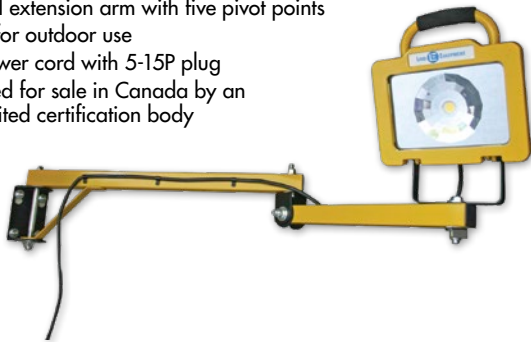
ZENITH
Safety Products



Model No.	Battery	Promo Price
XI790	Lead-acid battery (6V 6Ah)	129.00

HEAVY-DUTY DOCK LIGHT

- LED array rated for 50,000 hours
- 40" full extension arm with five pivot points
- Rated for outdoor use
- 10' power cord with 5-15P plug
- Certified for sale in Canada by an accredited certification body



Model No.	Promo Price
XD022	269.00

LIND  EQUIPMENT

ALL-PURPOSE GRANULAR SORBENT

- 99.5% natural diatomaceous earth
- Safely and quickly absorb water, grease, paint, alcohols, solvents, coolants, oils, and fuels
- Useful for spill containment, as a traction aid, and odour control
- For use in industrial plants, refineries, garages, workshops, machine shops, warehouses, and anywhere else a spill may occur
- Accepted for use in Canadian Food Processing Facilities
- Format: 25-lb. Bag



Model No.	Promo Price
SGX202	16.95

ZENITH
Safety Products

LED STOP & GO LIGHTS

- Simple, reliable and cost-effective warning system that reduces the risk of accidents around the loading dock
- Safety yellow polypropylene housing will not rust, pit, dent or corrode
- Integral eyebrow-type sun visors create extended visibility
- Mounting holes conform to standard building specifications
- Units can be used indoors or outdoors
- Dimensions: 6-3/8" W x 3-3/4" D x 11-3/8" H
- Lens Diameter: 4-1/4"
- Voltage: 115 V

XC102



Model No.	Description	Promo Price
XC102	Stop & Go - w/o flasher or switch	185.00
XC105	Stop & Go - w/flasher & switch	229.00
XC108	Stop & Go - Set, including one of each of the above	389.00

UNIVERSAL SPILL KIT

- Container Type: Bin
- Absorption Capacity: 63 US gal.
- Mobile
- **Includes:**
 - 100 Sorbent Pads (15" x 17")
 - 4 Sorbent Socks (3" x 120")
 - 4 Sorbent Pillows (18" x 18")
 - 1 Drain Cover (36" x 36")
 - 1 All-Purpose Granular Sorbent (25-lb. Bag)
 - 2 Pairs Nitrile Gloves, XL (10)
 - 2 Pairs of Safety Goggles (One Size)
 - 3 Disposal Bags (26" x 36")

ZENITH
Safety Products



Model No.	Promo Price
SHB360	499.00

FAN FORCED CONTRACTOR HEATERS

- Built-in thermostat
- Safety high temperature limit
- Built-in handle/cord storage
- Permanently lubricated motor
- 6' heavy-duty cord
- Steel spiral fan brazed to metal sheath elements for maximum heat transfer
- Voltage: 240 V
- Plug Type: #6-30P



EB100



EA477

Model No.	Motor Type	BTU/H Rating	Amperage	Wattage	Promo Price
EA477	Open	19100	23.34 A	5600	210.00
EB100	Closed	16380	20 A	4800	161.00

PERSONAL METAL SHOP HEATER WITH THERMOSTAT

- Features 3 settings for fan-only, high heat, and low heat
- Automatic overheat protection
- Durable sturdy steel cabinet
- Easy carry handle
- Certifications: cETL
- Power: 750 W & 1500 W
- Voltage: 120 V
- Heat Coverage: 800-1000 sq.ft.
- Power Cord Length: 6'
- Plug Type: Standard



Model No.	Promo Price
EB479	38.45

PORTABLE FAN-FORCED UTILITY HEATER

- Two heat settings (1300 W and 1500 W) provide full comfort and economic operation
- Adjustable thermostat
- Fan-only setting
- Tip over safety switch
- Built-in carrying handle with front safety guards
- Overheating protection
- Min. BTU Rating: 4435 BTU/H
- Max. BTU Rating: 5120 BTU/H
- Amperage: 10.8 A/12.5 A



Model No.	Promo Price
EA598	46.30

HEAVY-DUTY CEILING MOUNT HEATER

- Built-in ceiling bracket for easy mounting
- Automatic fan delay
- Rugged heavy-duty industrial heater
- Ideal for use in storage rooms, workshops, garages, warehousing
- Plug Type: Hardwire
- Voltage: 240 V
- Motor Type: closed
- 10-5/8" W x 12-1/2" D x 14" H



Model No.	BTU/H Rating Min. Max.	Amperage Min. Max.	Promo Price
EA652	8530 25600	26.5 A 31.3 A	365.00

OSCILLATING TOWER HEATER

- Built-in over heating protection, tip over switch and power indicator light
- Adjustable thermostat
- 2 heat settings (750 W and 1500 W) provide maximum comfort
- Includes fan only setting
- Voltage: 120 V
- Type: Ceramic
- Power cord length: 6'
- Min BTU Rating : 2550 BTU/H
- Max BTU Rating: 5200 BTU/H
- Dimensions: 7.4" W x 6.9" D x 18.5" H



Model No.	Promo Price
EB020	70.95

PORTABLE SALAMANDER HEATER

- Manufactured for long lasting, this portable heater for warehouses, factories, garages, construction sites, pavilions and other open areas, raise temperature to the desired level gradually for worksite comfort
- Adjustable thermostat
- Adjustable tilt angle
- Mounted on 10" solid rubber wheels
- Over heat protection
- Easy to move to different areas of the site
- Variable speed setting, fan forced
- Max. BTU Rating: 34 121 BTU/H
- Fan Motor Type: Enclosed air over, Ball bearing
- Type: Contractor
- Voltage: 240 V
- Wattage: 10080 W



Model No.	Promo Price
EA786	1112.00

Pricing in effect until December 27, 2024 or while quantities last. Taxes and freight extra. Issue #SDM224100NA

Due to recent commodity and market volatility, prices are subject to change, and may vary without prior notice.